

# Bastelbogen Nr. 906a

## kleiner 6-Spitz Stern, einseitig

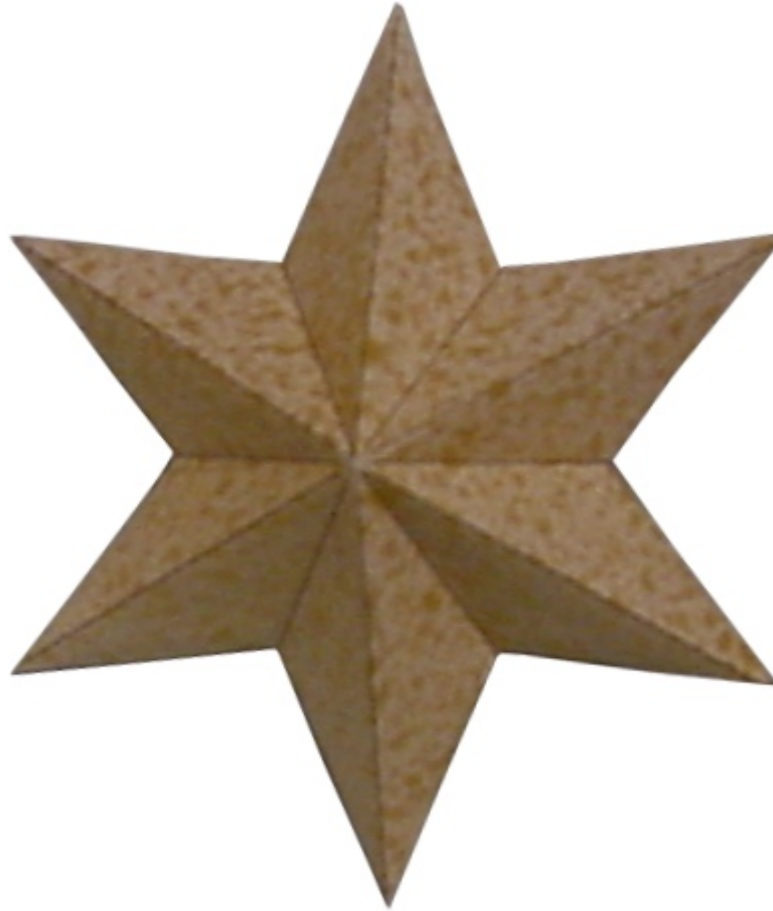
Durchmesser : 8,7 cm

Höhe : 2,5 cm

Seiten : 2

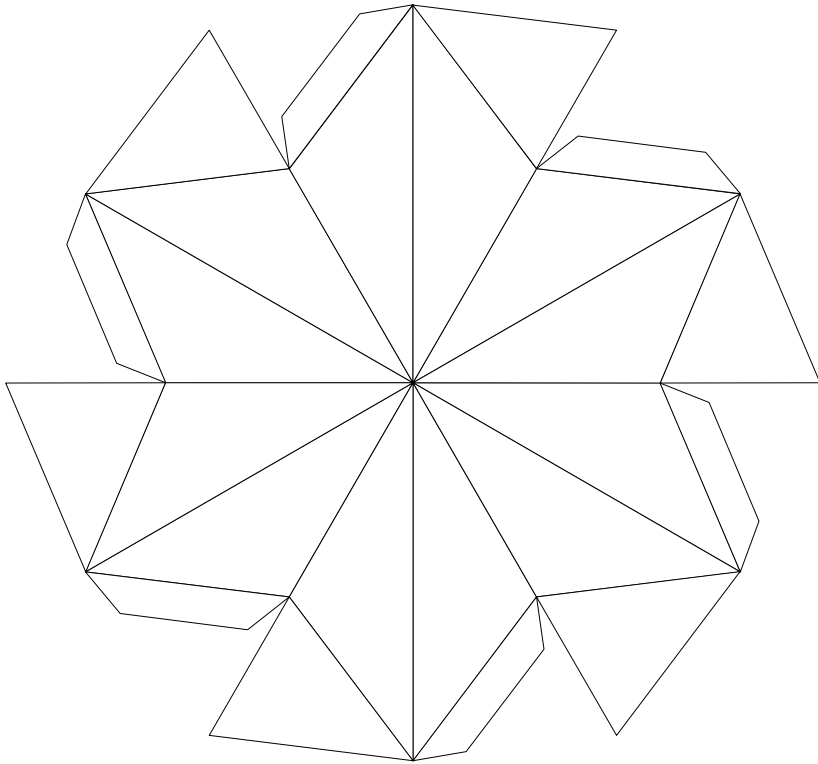
Anzahl der Teile: 2

Schwierigkeit: S2 leicht

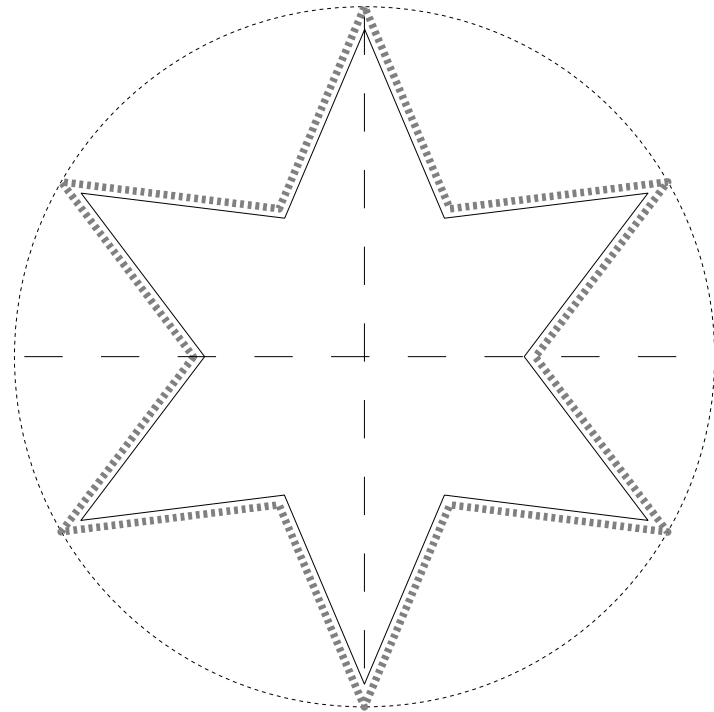


## kleiner 6-Spitz Stern, einseitig

Oberfläche

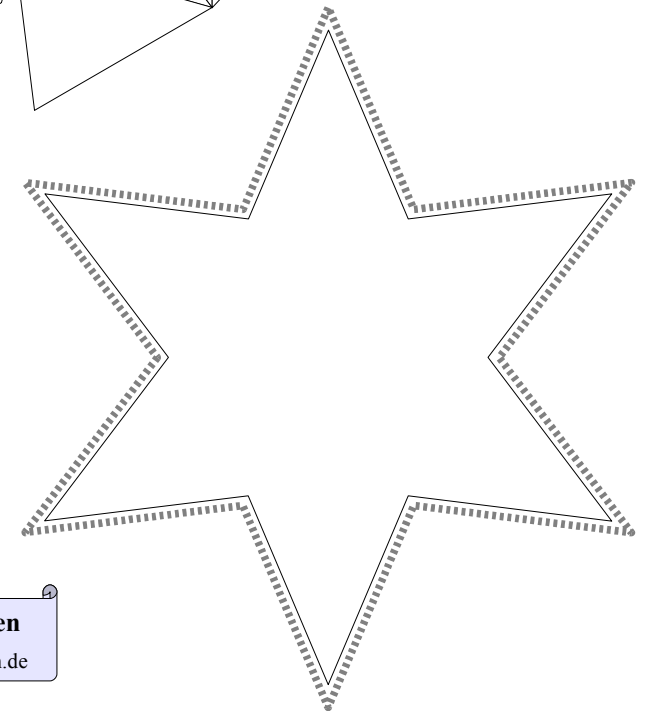
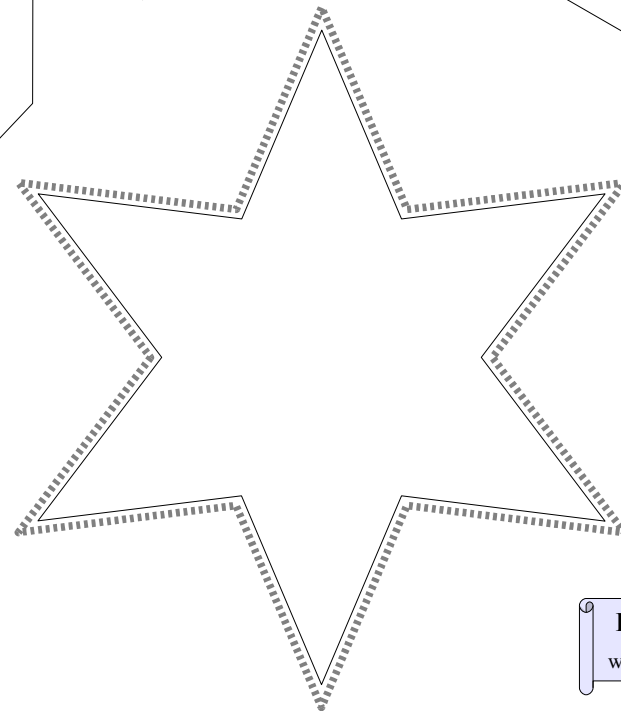
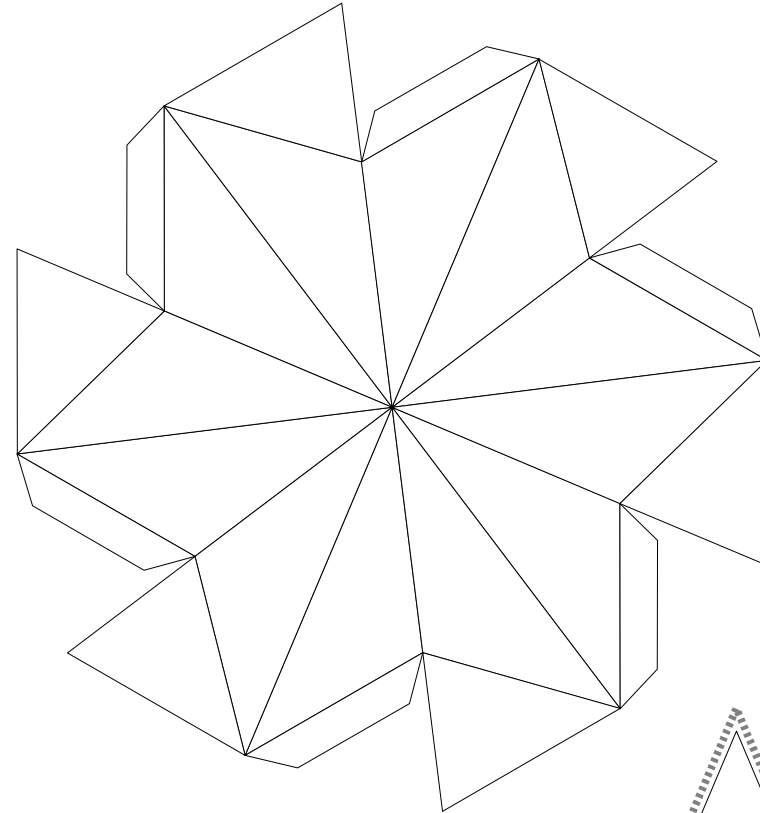
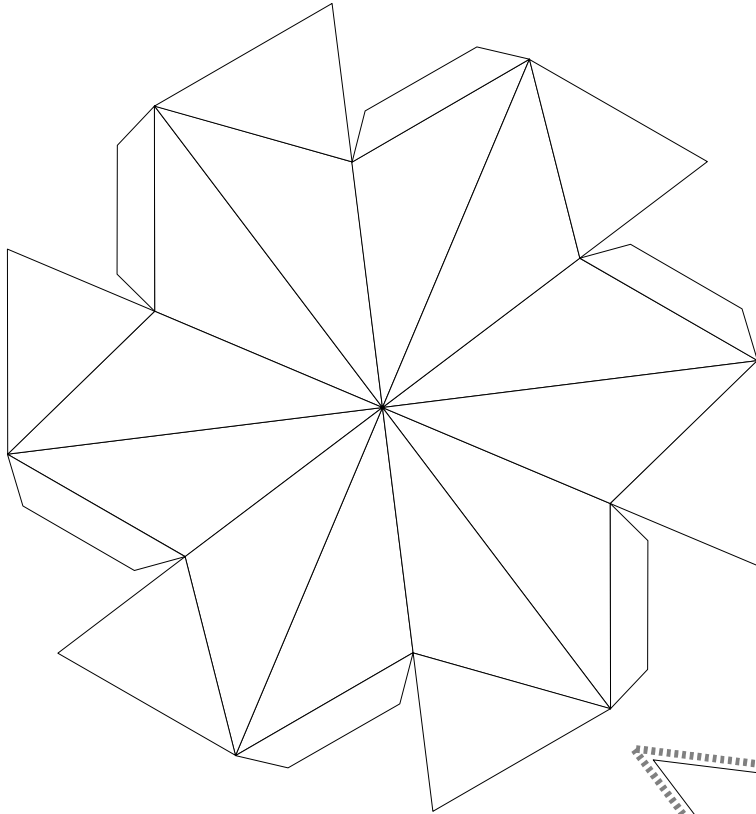


Grundfläche



# Bastelbogen Nr. 906a

kleiner 6-Spitz Stern, einseitig (2x)



\* PBB 2012 \*